



COMPANY PROFILE

- +267 3959 593
- +267 3182 068/9
- pinagare.org.bw
- pinagare@pinagare.org.bw
- Private Bag BR 57, Gaborone
- Plot 6391, Cnr. Lejara & Noko Roads, Broadhurst Industrial

2
0
2
4



TABLE OF CONTENTS

About Company	03
Vision & Mission	05
The Firm	06
Our Services	09
Our Blueprint	11
Meet The Team	27
Firm's Organizational Structure	31
Connect With Us	32



ABOUT COMPANY

Pinagare Engineers is a multi - disciplinary consulting firm which was founded in 1991. It undertakes engineering consultancy services in a various civil engineering disciplines and project management. We have over the years been able to translate clients' objectives in to real time projects through application of sound Engineering solutions that encompass Economic, Social and Environmental considerations.

Since its inception, the company has been actively involved in development projects of various nature in various parts of Botswana, Southern Africa, Eastern Africa, for both public and private sector.

The parent office (Botswana) has two directors both of whom are engineers. Two other principals, three senior engineers, four technicians, messenger and an established consultant to accountant to support them.

The South Africa office which was incorporated in 2005 has two principals, a senior engineer and a pool of support staff. Our newly established East African Office is based in Nairobi.

We also have several firms within Africa and globally with whom we have in the past co-operated in joint ventures, thus making it possible for us to handle any size of project in both civil and structural engineering. These firms are readily available for such joint ventures should it be necessary for us to require any particular specialization.





ABOUT COMPANY

Pinagare Engineers undertakes engineering consultancy services in the following disciplines;

PINAGARE ENGINEERS CONSULTING ENGINEERS

- High-Rise & Low-Rise public
- commercial and residential buildings. e.g. Schools, Hospitals, Churches, Hotels, Residential estates
- EIA Studies and other Projects
- Township/Village Infrastructure
- Project management
- Irrigation Infrastructure
- Roads
- Bridges
- Water Supply & Reticulation
- Sewerage

In terms of experience, Pinagare has had opportunities in offering Civil/Structural Engineering services, in various countries of Africa and our philosophy has been that no project is too small for us and each project deserves utmost attention no matter how far it is located.

The net effect of this policy is that we now command a wide range of experience and knowledge of conditions prevailing in the different parts of Africa and this is easily translated in to quality in project design and implementation



VISION & MISSION

Vision

To be an exemplary pioneering firm of professionals in the building environment

Mission

To provide engineering services beyond client's expectations

Goals

To provide optimized designs and engineering services that auger-well with social, economic and environmental dynamics





THE FIRM

Pinagare Engineers started operations in 1991 in Southern Africa and has two full fledged branches in Botswana and South Africa.

Pinagare Engineers is an independent civil and structural engineering consultancy firm working for the public and private sector clients in the provision of the professional services necessary for the planning, design, project management, construction supervision, contract administration and maintenance programming. The firm's operations are mainly in civil engineering and cover the following engineering disciplines:

- Structural Engineering
- Roads and Bridges
- Geotechnical Investigations
- Transportation and Traffic Engineering
- Wastewater(Sewage) Treatment
- Hydrology and Hydraulic Engineering
- Infrastructure Development
- Construction Supervision
- Water Supply

Pinagare Engineers has ample office space with a well equipped office to undertake any form of project work. The office has 10 networked stations, plotting facilities, relevant software packages such as Prokon, UNDP - D&C (for sewer and water design), Civil Designer Version 6.5.

The firm employs professional engineers, technicians and administration personnel. Currently there are four senior engineers, three engineers, three technicians and four administration personnel. Additional staff are employed on project - to - project basis for construction supervision assignments. These would consist of resident engineers, inspectors of work, land/ engineering surveyors, laboratory technicians and office assistants. When the need arises, Pinagare Engineers has a large database of professional consultants and associates who can be utilized to provide the services required.



THE FIRM

Pinagare Engineers thrives in determination to deliver value to the clients through the application of skilled professional services at all stages of the project cycle. All clients are given equal attention and regarded the same whether their projects are large or small, complex or simple.

The company's objective is to assist clients achieve their development goals through better planning concepts, innovative designs, improved construction programs, lower whole-life costs and reduced project risks. Great emphasis is placed on the endeavors to find new and better ways of providing engineering solutions. Hence appropriately qualified and experienced professionals are assigned to every project to ensure technical quality and timely delivery of service.





THE FIRM

THE FIRM OFFERS THE FOLLOWING SERVICES

PROJECT SERVICES

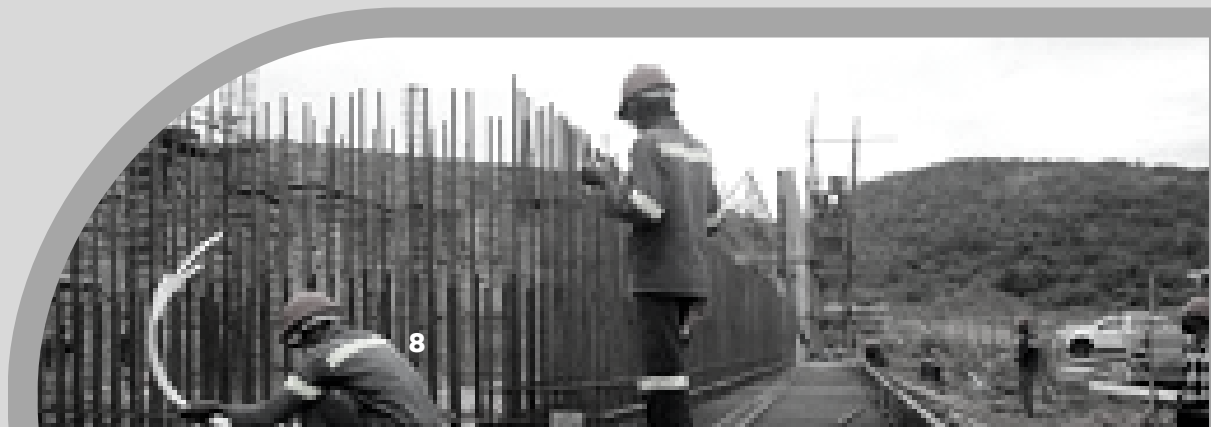
- Site investigation and selection, feasibility studies
- Project management
- Cost estimates
- Project planning
- Engineering control

PROJECT DESIGN

- Topographical survey
- Soil investigation
- Preliminary design report
- Final design and details specification,
- Measurements and quantities
- Tender documentation.

PROJECT MANAGEMENT AND CONSTRUCTION SUPERVISION

- Site management supervision
- Construction supervision
- Quality control
- Material testing
- Cost control
- Contract administration,
- Maintenance scheduling,
- Final accounting,,
- As-built documentation



OUR SERVICES

The specific civil engineering fields of operation are as described below

STRUCTURES

- Soil investigation
- Foundation design
- Low and highrise structure
- Factory buildings
- Office blocks
- Residential housing
- Public buildings
- Liquid containing facilities
- Retaining walls
- Silos
- Storage tanks
- Bridges and culverts
- dams
- Elevated highways
- Marine structures
- Structural surveys

ROADS

- Preliminary studies and route selection
- Bus terminals - topographical and material surveys
- Alignment and pavement design
- Parking facilities
- Bridges and culverts
- Traffic control systems
- Storm water drainage
- Traffic studies

WATER

- Rural and urban masterplans
- Intake and treatment works
- Boreholes
- Reservoirs and elevated pipelines
- Irrigation
- Distribution networks
- Pumping stations
- River training works
- Pollution control
- Dams



OUR SERVICES

The specific civil engineering fields of operation are as described below...

SEWERAGE

- Masterplans
- Sewer reticulations
- Sewage treatment and disposal
- Truck sewers and sea outfalls
- Industrial sewerage systems

OTHERS

- Environmental impact assessment
- Project management
- Site supervision
- Building regulations
- Feasibility studies
- Investment analysis
- Financial planning



BLUEPRINT

SELECTED PROJECTS DONE BY PINAGARE ENGINEERS



- Tlokweng / UB-Hospital Bridge -

The bridge design incorporates high-strength reinforced concrete, structural integrity and durability, standard safety regulations, integrating features like fire-resistant materials and effective drainage systems. The design emphasizes optimal load distribution and stability,

BLUEPRINT

SELECTED PROJECTS DONE BY
PINAGARE ENGINEERS



- Central Transport Organisation (CBD) -

Design and construction supervision of 12 storey Reinforced Concrete office and retail complex, including basement car parks. The external works comprise of surfaced roads and parking areas, water reticulation (WUC) standards & approval), fire fighting reticulation, sewerage reticulation and storm water drainage



BLUEPRINT

SELECTED PROJECTS DONE BY
PINAGARE ENGINEERS



- National Forensic Laboratory -

Multi-storey office complexes constituting masonry works, reinforced concrete, structural steel, High security laboratories with concrete walls. Other works include external works comprising of surfaced roads and parking areas, water reticulation (WUC) standards & approval), fire fighting reticulation, sewerage reticulation and storm water drainage.

BLUEPRINT

**SELECTED PROJECTS DONE BY
PINAGARE ENGINEERS**



Department of Public Prosecution (DPP) Headquarters - CBD

Design and construction supervision of Office block and records library for the Directorate of Public Prosecution building as well as associated external works comprising of: surfaced roads, parking areas, water reticulation, fire reticulation, sewerage reticulation and storm water drainage.

BLUEPRINT

SELECTED PROJECTS DONE BY PINAGARE ENGINEERS



Police Stations in Mmathubudukwane and Maitengwe

Design and Construction Supervision of double story office block and staff housing. External works comprising of surfaced roads and parking areas, storm water drainage, water supply/storage, sewerage reticulation and disposal.

BLUEPRINT

SELECTED PROJECTS DONE BY PINAGARE ENGINEERS



- Shakawe Primary Hospital -

Design of the hospital facilities including wards, operating theatres, catering facilities and large block of housing. The external works comprised of surfaced roads and parking areas, water reticulation (to WUC standards & approval), fire fighting reticulation, sewerage reticulation and storm water drainage.

BLUEPRINT

SELECTED PROJECTS DONE BY PINAGARE ENGINEERS



- Maruapula Flats -

High-rise residential flats, parking areas, surfaced roads, water reticulation, fire fighting reticulation, sewerage reticulation and storm water drainage.

BLUEPRINT

SELECTED PROJECTS DONE BY PINAGARE ENGINEERS



Grand Aria Hotel, Tlokweng

Multi-story hotel structure constituting masonry works, reinforced concrete, structural steel, High security laboratories with concrete walls. Other works include external works comprising of surfaced roads and parking areas, water reticulation (WUC) standards & approval), fire fighting reticulation, sewerage reticulation and storm water drainage.

BLUEPRINT

SELECTED PROJECTS DONE BY PINAGARE ENGINEERS



Gymnastics sports arena and conference facilities

Design and Construction Supervision of amphitheatre and conference hall consisting of concrete framed structures and steel roof girders. The conference hall is a two storey Reinforced Concrete conference centre complex, including basement and office blocks. The external works comprise of parking areas, water reticulation to (WUC) standards & approval), fire fighting reticulation, sewerage reticulation and storm water drainage.



BLUEPRINT

SELECTED PROJECTS DONE BY PINAGARE ENGINEERS

PALAPYE FIRE STATION

Design and construction supervision of Fire Station involving administration wing, dormitories, workshop, water supply/storage, internal reticulation and 500m outfall sewer, access road

SEROWE VILLAGE MAIN SANITARY WORKS

Design and construction supervision of water borne sewerage scheme consisting of 370000 meters of primary, secondary and tertiary sewers, seven pumping stations, one lift station and three sets of wastewater treatment ponds. 8500 manholes and 3000 house connections.

SEBINA - MAROBELA ROAD AND NYAMAMBISI BRIDGE

Engineering of Road and Bridge incorporates high-strength reinforced concrete, structural integrity and durability, standard safety regulations,

LOTSANE RIVER BRIDGE

Design and supervision of three span 69metre long reinforced concrete river crossing along the Malaka - Leboane - Moremi Road

PITIKWE PRIMARY SCHOOL FOR LOBATSE TOWN COUNCIL

Completed engineering design of school facilities including double storey classrooms and offices and teachers housing. The external works comprised of surfaced roads and parking areas, water reticulation (DWA & DWA standards & approval, fire fighting reticulation and storm water drainage.

SEROWE VILLAGE ROADS RESEALING PROJECT

Rehabilitation works involving 17km condition assessment of the main village roads, detailed material investigations, route and engineering surveys, design of horizontal/vertical alignment, pavement design, material specification, cost estimates, bill of quantities, tender documentation and supervision of construction works.

NEW LENTSWE PRIMARY SCHOOL IN MOCHUDI

The design and preparation of engineering drawings for the classrooms, kitchen/dining complex, administration block, playing fields and pavilion, water supply and storage, sewer system, road, storm water drainage and footpaths



BLUEPRINT

SELECTED PROJECTS DONE BY PINAGARE ENGINEERS

LOBATSE COLLEGE OF EDUCATION

Design and Construction Supervision of classrooms, laboratories, multi purpose hall, toilets blocks, staff houses, kitchen and dining room, highrise hostels, modern library block and external works. The external works comprised of surfaced roads and parking areas, playing grounds water reticulation (DWA standards & approval), fire fighting reticulation, sewerage reticulation and storm water drainage

COOPERATIVE TRAINING COLLEGE AT SEBELE

Full fledged training college for the Department of Cooperative Development. Consisting of double storey Administration block, Classrooms, Recreation, Kitchen/Dining, Hostels and external works of water supply/storage, sewerage reticulation and internal roads

EXTENSIONS & ALTERATIONS TO NALEDI SENIOR SECONDARY SCHOOL & KAGISO SECONDARY SCHOOL

Design and Construction Supervision of classrooms, laboratories, multipurpose hall, toilets blocks, library, staff houses, extension to kitchen and dining room and external works. The external works comprised of surfaced roads and parking areas, playing grounds water reticulation (DWA standards & approval), fire fighting reticulation, sewerage reticulation and storm water drainage

GHANZI VILLAGE SEWERAGE RETICULATION (IN ASSOCIATION WITH MT & ASSOCIATES)

Design and construction supervision of major village sewer network including gravity and pumping mains and network treatment works.

GABORONE RECORDS CENTRE

Design and Construction Supervision of office block, records stacking stores, reference library and associated external works comprising of surfaced roads and parking areas, water reticulation (DWA standards & approval), fire fighting reticulation, sewerage reticulation and storm water drainage.

SEFHARE PRIMARY HOSPITAL

Construction of hospital buildings, including theatres, wards, staff housing with external works comprised of surfaced roads and parking areas, water reticulation (DWA standards & approval), fire fighting reticulation, sewerage reticulation, storm water drainage and wastewater treatment ponds



BLUEPRINT

SELECTED PROJECTS DONE BY PINAGARE ENGINEERS

MAHALAPYE PRIMARY HOSPITAL

Design of the hospital facilities including wards, theatres, catering facilities and external works. The external works comprised of surfaced roads and parking areas, water reticulation (DWA standards & approval), fire fighting reticulation, sewerage reticulation and storm water drainage.

MULTI MODEL TAXI RANK FOR GOVEN MBEKI MUNICIPALITY IN MPUMALANGA

Design of double storey Bus and Minibus Station in reinforced concrete with large spans. Provision of pedestrian facilities. Civil engineering works comprised of water, fire fighting, sewerage reticulation and storm water drainage

MAHALAPYE POLICE STATION

Design and Construction Supervision of three story office block, stables, staff houses and associated external works comprising of surfaced roads and parking areas, water reticulation (DWA standards & approval), fire fighting reticulation, sewerage reticulation and storm water drainage

BOTA OFFICES

Design and Construction Supervision of four story office complex and external works comprising of surfaced roads and parking areas, water reticulation (DWA standards & approval), fire fighting reticulation, sewerage reticulation and storm water drainage.

SHAKAWE PRIMARY HOSPITAL

Design of the hospital facilities including wards, operating theatres, catering facilities and large block of housing. The external works comprised of surfaced roads and parking areas, water reticulation (DWA standards & approval), fire fighting reticulation, sewerage reticulation and storm water drainage

HUKUNTSI CLINIC

Hukuntsi Clinic design and construction supervision of single storey fully fledged clinic. External works comprising of surfaced roads and parking areas, water reticulation (DWA standards & approval), fire fighting reticulation, sewerage reticulation and storm water drainage



BLUEPRINT

SELECTED PROJECTS DONE BY PINAGARE ENGINEERS IN BOTSWANA

CLIENT	PROJECT TYPE & LOCATION	VALUE	STATUS
Ministry of Works and Communication Department of Building Services	National Forensic Laboratory (3 Storey Complex)	P155M	Completed
Department of Building Services	Shakawe Primary Hospitals (Northwest District)	P150M	On Going
Ministry of Local Government	Upgrade of Primary Schools Central District	P18.8M	Completed
Ministry of Local Government	Upgrade of Primary Schools Ghanzi District	P10M	Completed
Ministry of Local Government	Upgrade of Primary Schools Kweneng District	P9M	Completed
Botswana Housing Corporation	Densification of Residential House at Various sites - Gaborone	P120M	Design Completed
Universal Builders	12 Storey commercial complex	P250M	Completed



BLUEPRINT

SELECTED PROJECTS DONE BY PINAGARE ENGINEERS IN BOTSWANA

CLIENT	PROJECT TYPE & LOCATION	VALUE	STATUS
Department of Building Services	Upgrade of Lobatse College of Education	P320M	Completed
Department of Building Services	Mahalapye Police Station Central District (Botswana)	P141M	Completed
Department of Building Services	Gaborone Records Centre Gaborone	P55M	Completed
DBES - Botswana	Upgrade of Teachers College Francistown	P10M	Completed
Universal Builders	10 Storey Highrise Residential complex	P120M	On Going

SELECTED PROJECTS DONE BY PINAGARE ENGINEERS IN KENYA

CLIENT	PROJECT TYPE & LOCATION	VALUE	STATUS
Home - Africa	Migaa Golf Estate - Nairobi Feasibility Study, Preliminary design of water reticulation, course irrigation, sewage treatment-works, access & internal road	US\$10m	Feasibility study
CFS	Containers Depot - Mombasa	KES120m	Completed



BLUEPRINT

SELECTED PROJECTS DONE BY PINAGARE ENGINEERS IN SOUTH AFRICA

CLIENT	PROJECT TYPE & LOCATION	VALUE	STATUS
MSW Consulting	New railway overhead crossing bridge interchange - Mpumalanga Province	R80m	Design Stage
Gauteng Provincial Government	Lilian Ngoyi African Craft Workshop Pretoria	R12m	Completed
C/o Bkk quantity Surveyors-Ministry of Education	Matloding Primary School Northwest Province	R13m	Completed
In Association with Denzhe Engineers Gauteng Provincial Government	Upgrading of Tembisa Hospital Gauteng	R1.2b	Inception Study
Govan Mbeki	Multimodal Taxi Rank & Access	R40m	Tender
Municipal Mpumalanga Province	Roads - Limpopo Province		
In Association with Isiphepho Engineers Completion of Ludlowline-Inyaka Dam Bulk Water Supply	Bohlabela District Municipality Limpopo Province	R13m	Completed



BLUEPRINT

SELECTED PROJECTS DONE BY PINAGARE ENGINEERS IN SOUTH AFRICA

CLIENT	PROJECT TYPE & LOCATION	VALUE	STATUS
In Association with Isiphepho Engineers -Inyaka Dam Bulk Water Kumana to Ludlow	Bushbuckridge Municipality	R25m	Completed

SELECTED PROJECTS DONE BY PINAGARE ENGINEERS IN LESOTHO

CLIENT	PROJECT TYPE & LOCATION	VALUE	STATUS
Ministry of Water Lesotho	Mazenod, Roma, Pitseng and Korokoro water supply projects Lesotho	R48m	Completed



MEET THE TEAM

REGIONAL MANAGING DIRECTOR AND PRINCIPAL ENGINEER

- ENG. JOHN M. NJONDE -

DATE OF BIRTH : 19 March 1964
NATIONALITY: Kenya

COUNTRIES OF WORK EXPERIENCE:

Botswana, Republic of South Africa and
Kenya

PROFESSIONAL MEMBERSHIP

Civil Engineer (Pr Eng - (SA & Kenya)

EDUCATION :

BSc. Civil Engineering (Hons), University of Nairobi, 1989

KEY RELEVANT EXPERIENCE

- Multi-disciplinary Engineer with understanding of various codes of practice utilised in Engineering planning and design,
- Conversant with FIDIC and other forms of contracts used in Southern and East Africa.
- Has been design Engineer and construction team's leader in a range of projects, and capable of steering any civil/structural project, as a project manager/design Engineer at all stages.
- Well exposed to the interrelation of professional Engineering with social, political, environmental and Economics dynamics.
- Involved in preparation of proposals, engineering planning, design and construction supervision of
- Roads , Bridges & complex structures
- Irrigation, water and related feasibility studies, planning, and design
- Master planning projects
- High-rise residential, commercial and industrial buildings



MEET THE TEAM

REGIONAL MANAGING DIRECTOR AND PRINCIPAL ENGINEER

- ENG. JOHN M. NJONDE -

LANGUAGES

LANGUAGE	SPEAKING	READING	WRITING
English	Good	Good	Good
Swahili	Good	Fair	Fair
French	Good	Fair	Fair
Setswana	Fair	Fair	Poor

EMPLOYMENT RECORD

PERIOD	EMPLOYER	POSITION HELD
2005 to Date	Pinagare Engineers	Projects Director & Senior Design Engineer
1994 to 2004	Engiconsult (Pty) Ltd, P.O BOX 20169 Gaborone	Director and Senior Design Engineer



MEET THE TEAM

PRINCIPAL STRUCTURAL ENGINEER AND QUALITY CONTROL

- ENG. KGOSIMANG H. THIPE -

DATE OF BIRTH : 24 December 1956
NATIONALITY: Motswana

COUNTRIES OF WORK EXPERIENCE:

Botswana and Republic of South Africa
(38 years of Experience)

EDUCATION:

BEng Polytechnic of Central London, 1977-1979
MBA SouthEastern University- Columbia USA,
1983-1985

PROFESSIONAL MEMBERSHIP

ERB-BOTSWANA

OTHER TRAINING:

Master of Project Management

LANGUAGES

LANGUAGE	SPEAKING	READING	WRITING
English	Good	Good	Good
Setswana	Good	Good	Good

EMPLOYMENT RECORD

PERIOD	EMPLOYER	POSITION HELD
1990 to Date	Pinagare Engineers	Director - project management, Design and Construction supervision of Various Civil Engineering Projects.
1986 to 1988	TTCS	Engineer Design and Construction, Supervision of structures and infrastructure
1982-1983	Marples ridgeway(Consulting Engineers)	Site Engineer
1979 to 1981	Sir Alexander GIB	Engineer - Design and construction supervision of water supply and reticulations



MEET THE TEAM

CIVIL/STRUCTURAL ANALYSIS AND MODELING ENGINEER

- ENG. MODIRI SERALANYANE -

DATE OF BIRTH : 08 November 1982
NATIONALITY: Motswana

EDUCATION:

Bachelor of Engineering(Civil), University of Botswana, 2001-2017

COUNTRIES OF WORK EXPERIENCE:

Botswana and South Africa

PROFESSIONAL MEMBERSHIP

Registered Professional Engineer, Pr. Eng, Engineers Registration Board (ERB), Botswana.

Member, Botswana Institution of Engineers (MBIE)

OTHER TRAINING:

Dynamic Loading on Structures-Joburg-SA, 3 cpd points MIDAS software-structural modelling-online

Tailings Disposposal Management - Fraser Alexander-Joburg-SA-3 cpd points

LANGUAGES

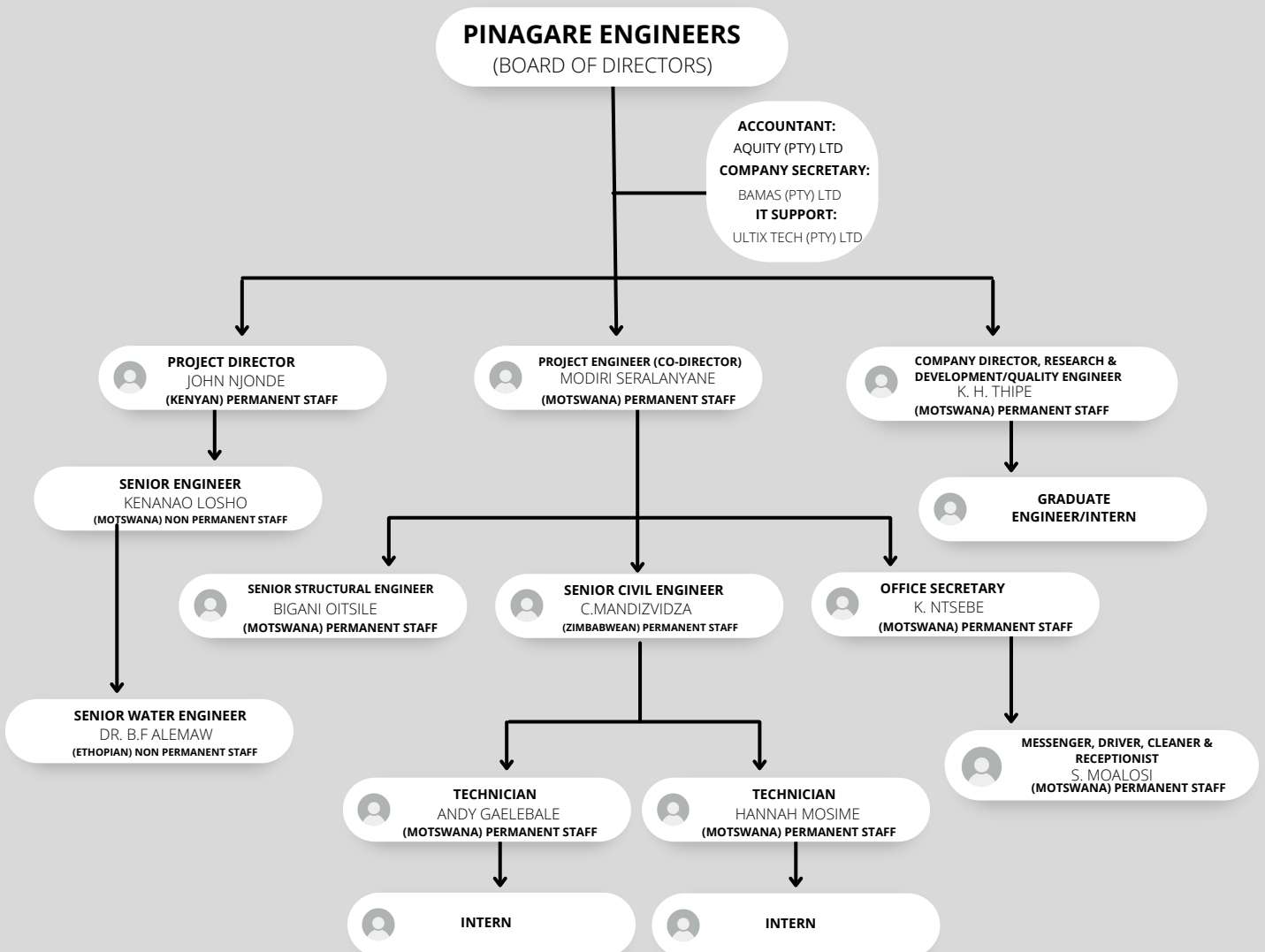
LANGUAGE	SPEAKING	READING	WRITING
English	Good	Good	Good
Setswana	Good	Good	Good

EMPLOYMENT RECORD

PERIOD	EMPLOYER	POSITION HELD
2014 to 2019	CPP Botswana	Design Engineer
2013 to 2014	Legato Construction	Design Engineer and Site Engineer
2005-2013	Pinagare Engineers	Graduate to Assistant Engineer



FIRM'S ORGANIZATIONAL STRUCTURE





CONNECT WITH US

- BOTSWANA -

- ☎ +267 3959 593
- 📞 +267 3182 068/9
- 🌐 pinagare.org.bw
- ✉ pinagare@pinagare.org.bw
- ✉ Private Bag BR 57, Gaborone
- 🏠 Plot 6391, Cnr. Lejara & Noko Roads, Broadhurst Industrial

- KENYA -

- ☎ 020828303/4
- ✉ P. O. Box 23751-00100, Nairobi
- 🏠 Suite 307 Blue Violets Plaza Kindaruma Rd Off Ngong RD

- SOUTH AFRICA -

- ☎ +27 83 592 0342
- 🏠 840 Duncun Street Brooklyn 0181